

GYAN BHARATI SCHOOL

Quest

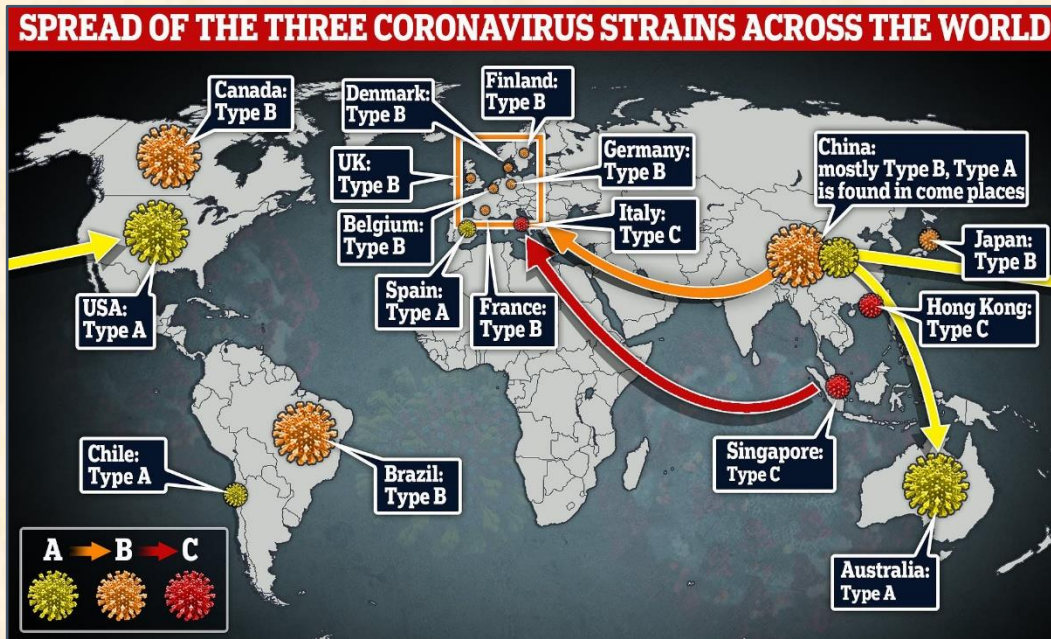
A monthly Science and Mathematics magazine

5/5/2020

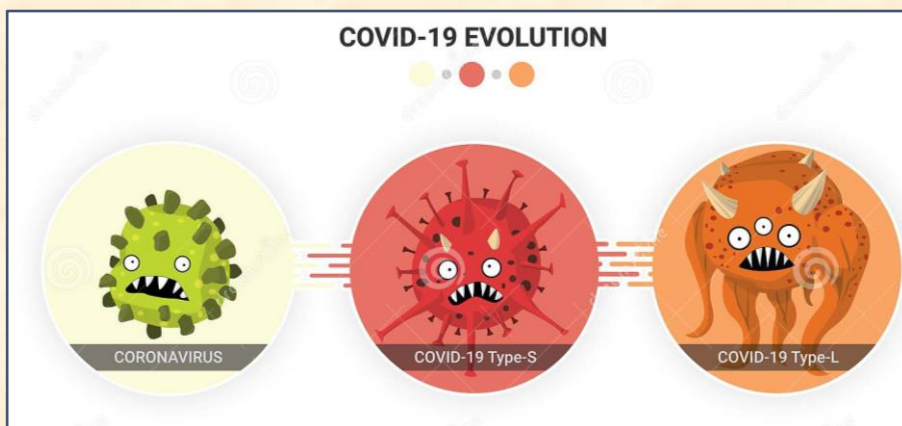
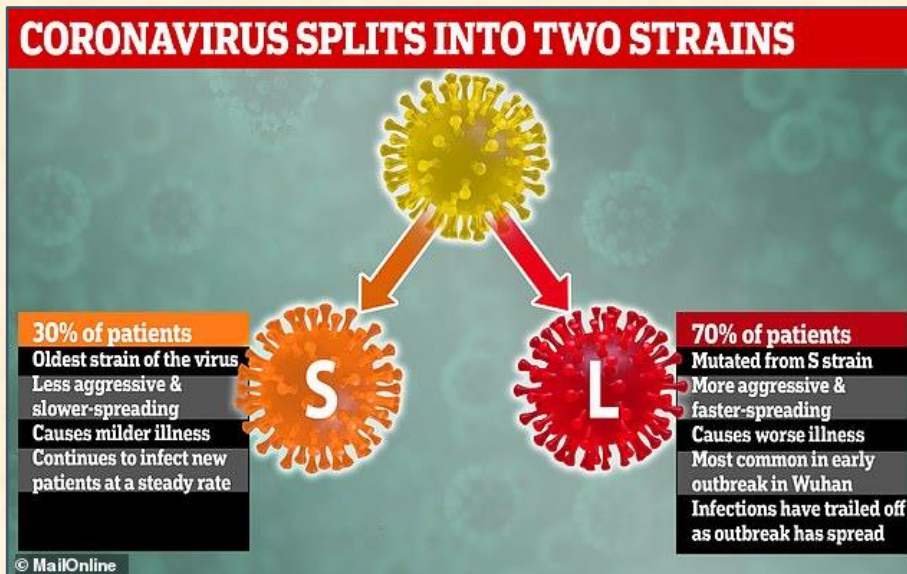
Compiled by Manpreet

THE STORY OF CORONO-VIRUS...WILL IT COME TO AN END?

It came and it conquered the world...

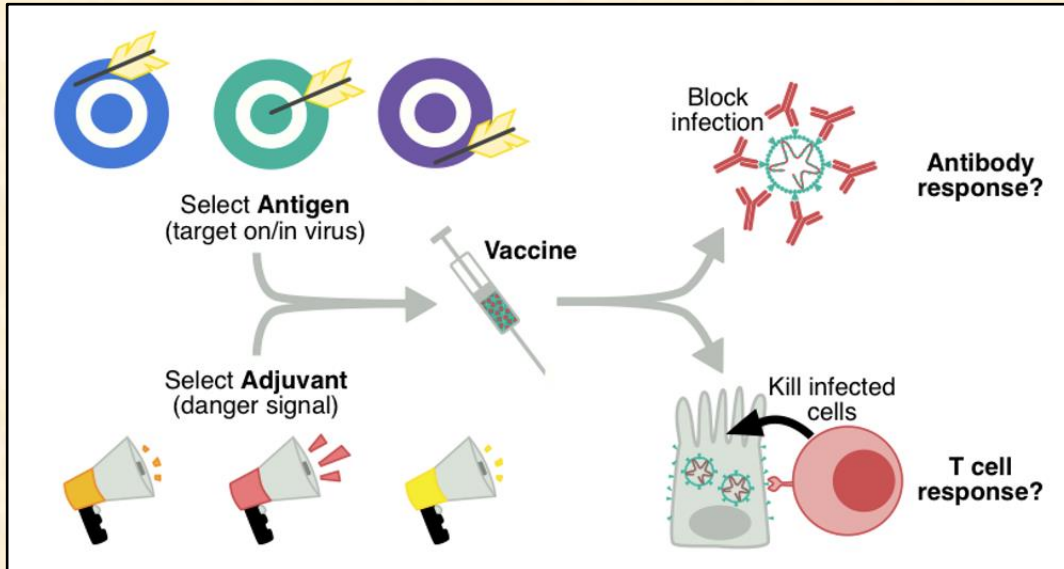


So, why is it spreading like fire and not coming under control? The answer is its high mutation rate. The virus that originated in Wuhan has mutated into three different strain and has spread across the globe.

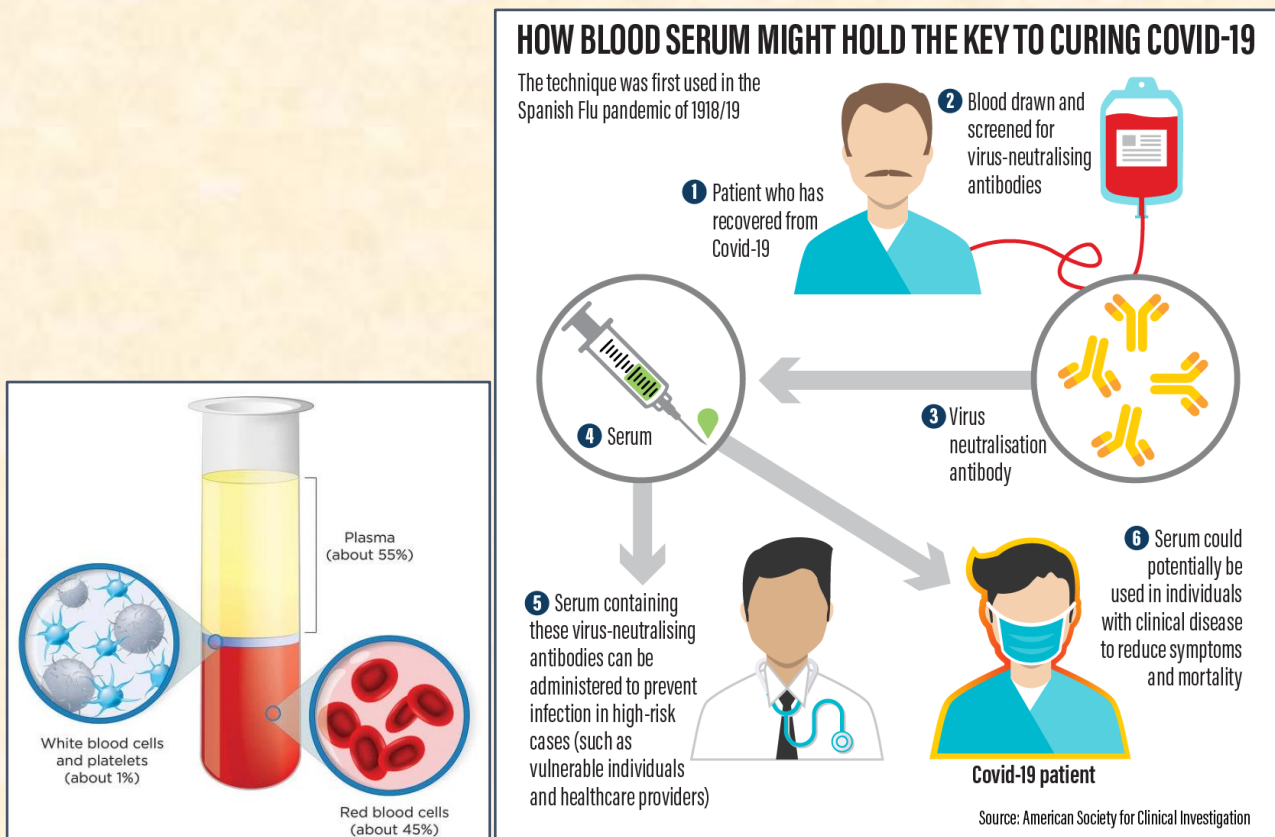


THE RESORT:

1. **Vaccine development:** Researchers are trying to develop vaccines against the spike protein of the Coronavirus that shows a limited mutation rate as compared to other parts of the virus. Administration of the vaccine will result in the generation of antibodies and T cell response which are effective in combating the infection.



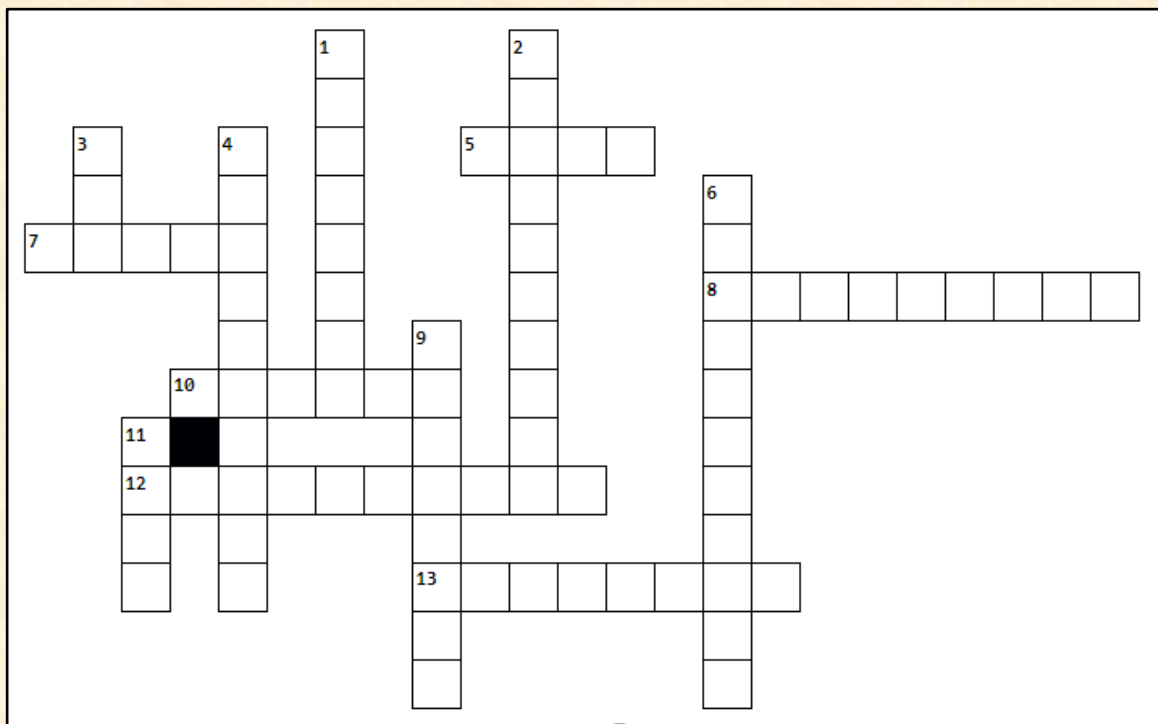
2. **Plasma Therapy:** Plasma therapy is the injection of plasma (rich in antibodies against Coronavirus) from a recovered patient into an infected person to fight the disease. Plasma from one donor can be given to two infected patients. It is a therapy that was also employed to recover from SARS in 2002.



Vaccine development is under clinical trials and so is the Plasma therapy which is being administered at a slow rate. Therefore, the best way to fight Coronavirus is to follow the lockdown.



CROSSWORD PUZZLE: Have a take on how much Corona aware you are!!



Across

5. It is recommended to wear a _____ to prevent the spread of Coronavirus infection.
7. The outbreak of Corona-virus was identified in _____
8. An alcohol based liquid used to decrease infectious agents.
10. A pale yellow coloured liquid separated from blood used in therapy of Covid-19
12. Vaccine helps in the generation of _____ that control the infection.
13. Coronavirus is showing a _____ rate due to which new strains have developed.

Down

1. Corona-virus spreads through _____
2. Restriction on the movement of people having Covid-19 is called _____
3. Covid-19 has symptoms like _____
4. A machine to deliver breaths to a patient with breathing difficulty.
5. Covid-19 is a _____ disease.
6. Covid-19 has been categorized as world-wide _____.
11. The source of Coronavirus are _____ from which the virus has entered the humans.